



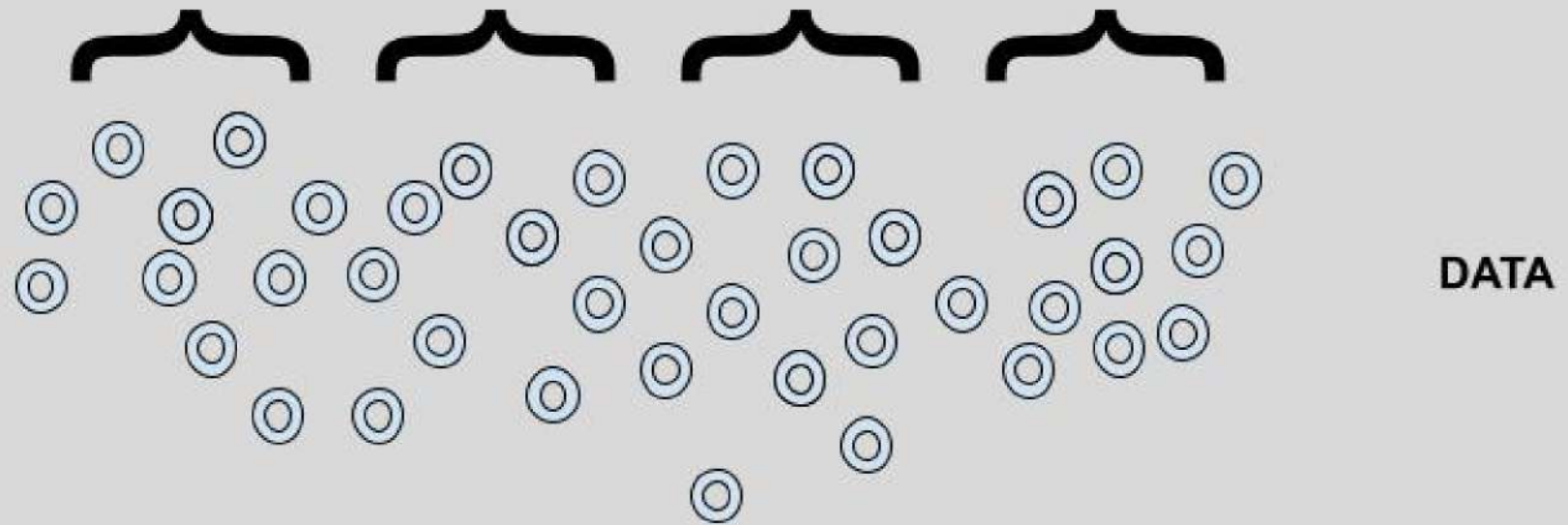
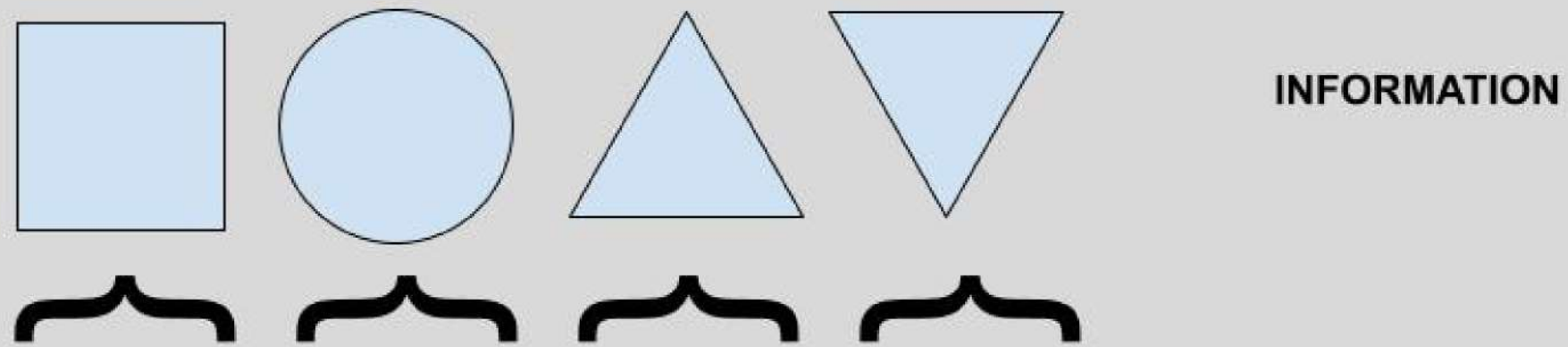
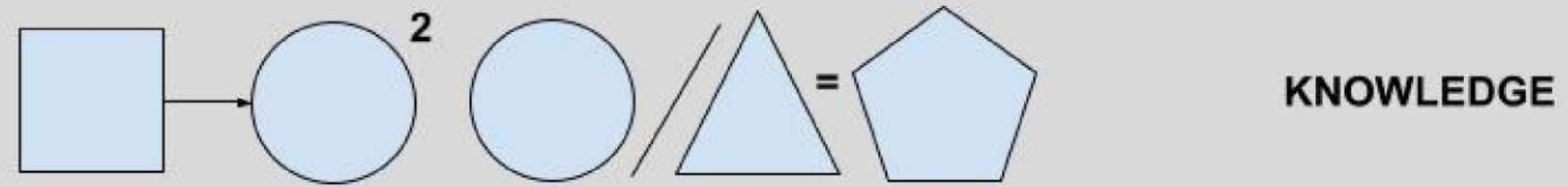
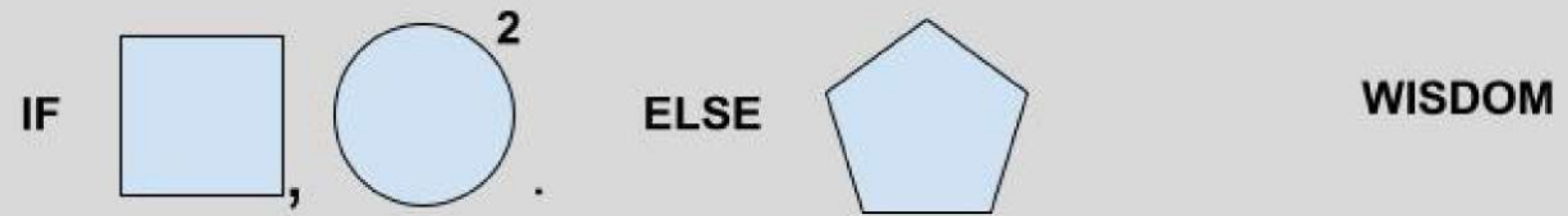
AARHUS INSTITUTE OF  
ADVANCED STUDIES

# Agent-based modelling

— DR IZA ROMANOWSKA



(01)



(01)

---

The hierarchy of knowledge

*- Scott E. Page "The Model Thinker"*

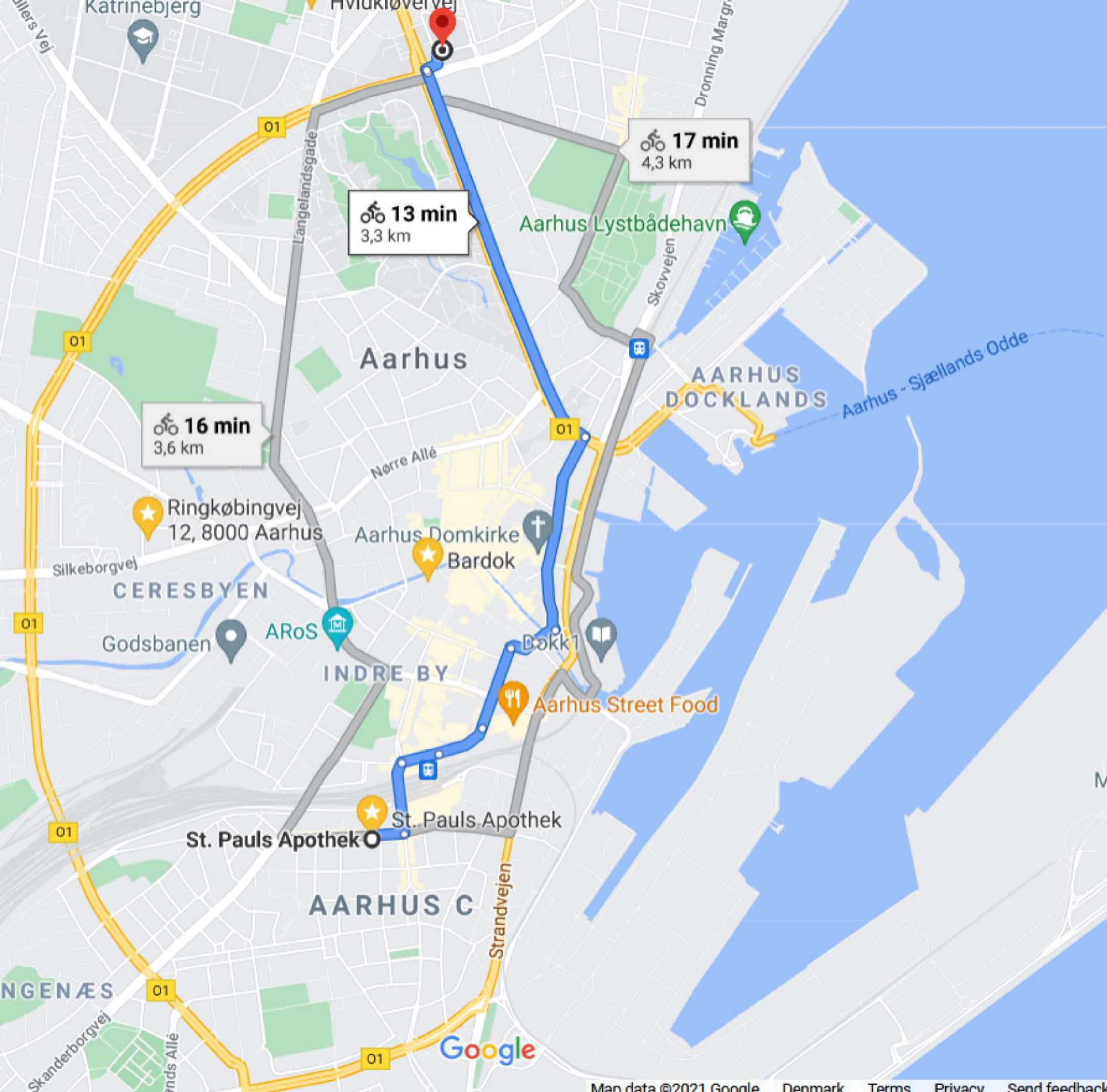
# What is a model?

(02)

---

## MODEL DEFINITION

Presentations are communication tools that can be used as demonstrations, lectures, speeches, reports, and more. It is mostly presented before an audience. It serves a variety of purposes, making presentations powerful tools for convincing and teaching.



# What is a model?

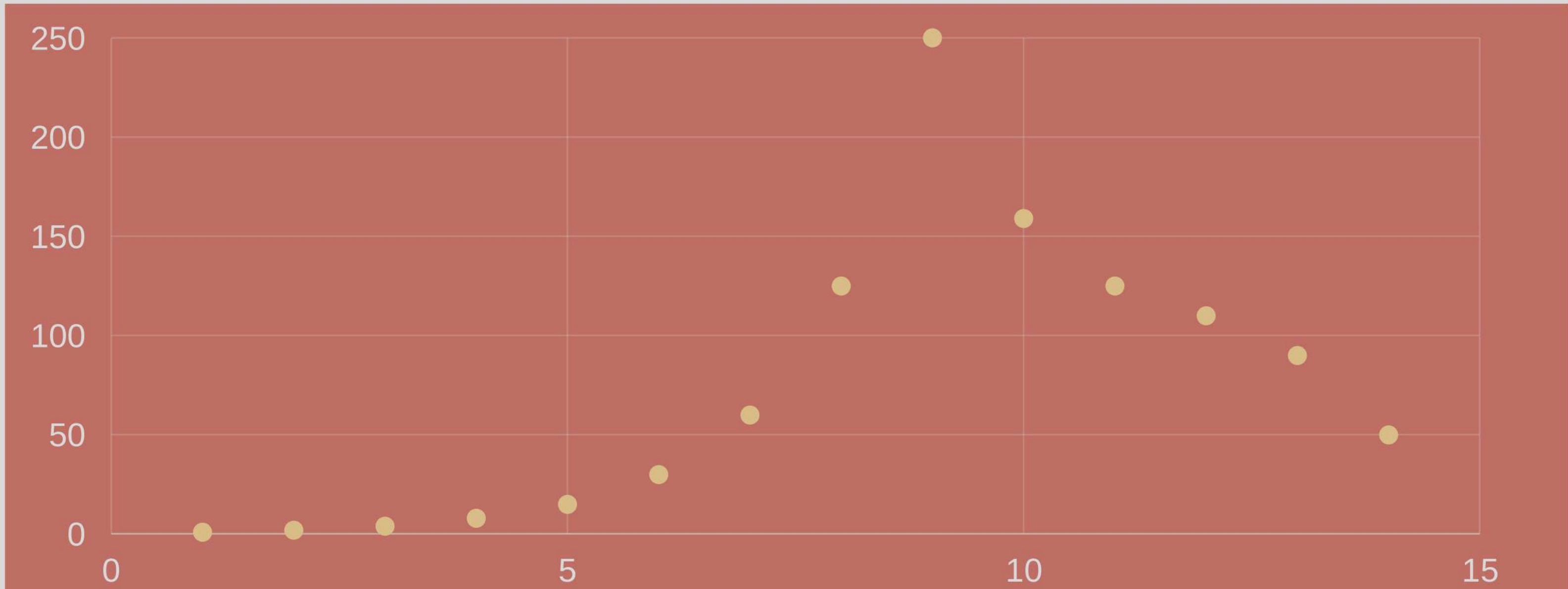
(03)

---

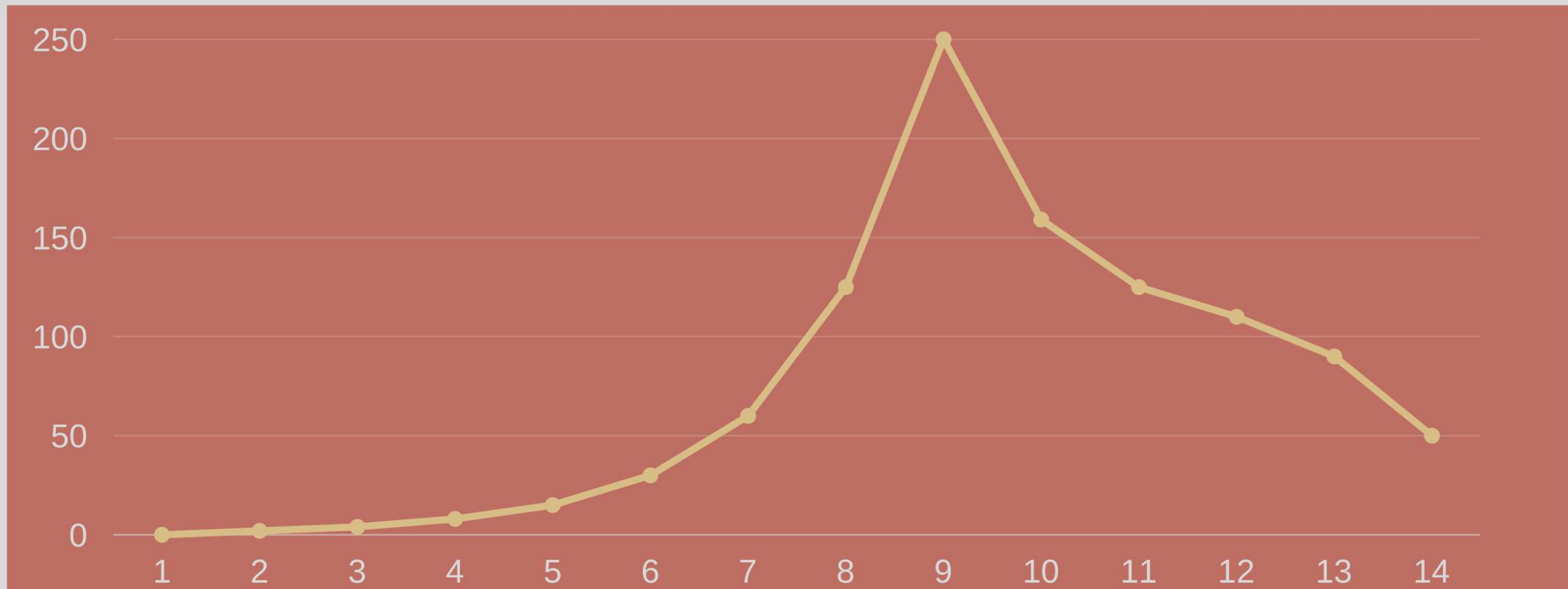
## MODEL DEFINITION

An abstract simplified representation of the world which preserves some aspects of reality but not all. Multiple models of any one system are possible. Simulation is a model with a time dimension.

# IS THIS A MODEL?



# IS THIS A MODEL?



# IS THIS A MODEL?

THE SECOND WORLD WAR HAPPENED BETWEEN 1939 AND 1945.

THE SECOND WORLD WAR WAS A DIRECT RESULT OF AN ECONOMIC CRISIS.

THE ROMAN REPUBLIC ENDED IN 27BC WITH THE ESTABLISHMENT OF OCTAVIAN AS AUGUST.

HUMAN SOCIETIES GO THROUGH CYCLES OF DEMOCRACY AND AUTHORITARIAN REGIMES.

ARMY X HAS LOST 20 000 MEN IN BATTLE Y.

ARMY X HAS WON BATTLE Y THANKS TO THEIR ARTILLERY.

(07)

# There are many different models

*MAP*

Spatial model

*REGRESSION*

Statistical model

*IDEAS & HYPOTHESES*

Conceptual model

*SIMULATION*

Dynamic model



# Agent-based modelling



*Agents*



*Environment*



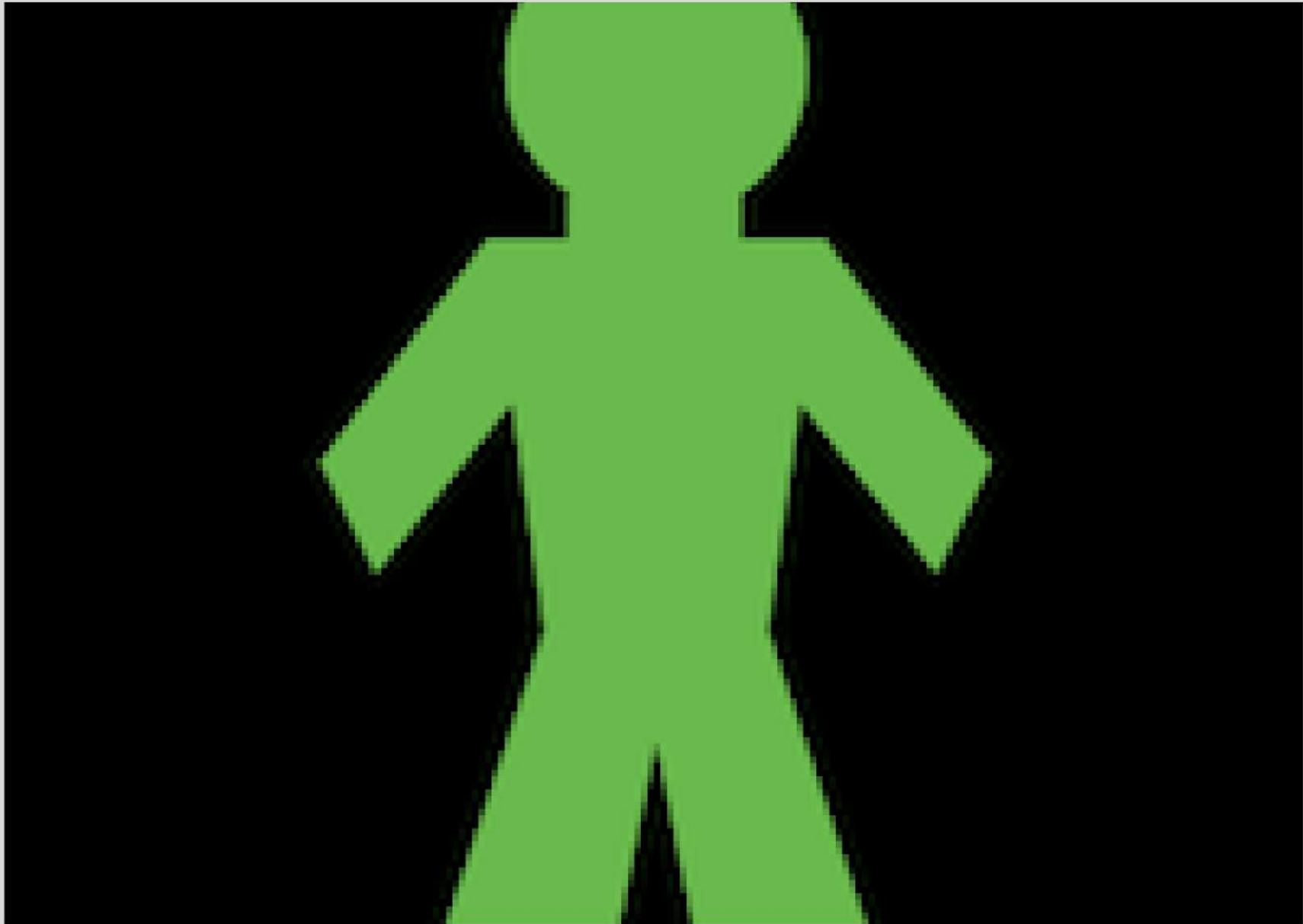
*Time*

(08)

---

MAIN COMPONENTS

# AGENTS



(09)

---

## Individual

Each agent has attributes: age, energy, wealth, speed, location, preference...

## Unique

The combination of attributes may be unique in the population

## Adaptable

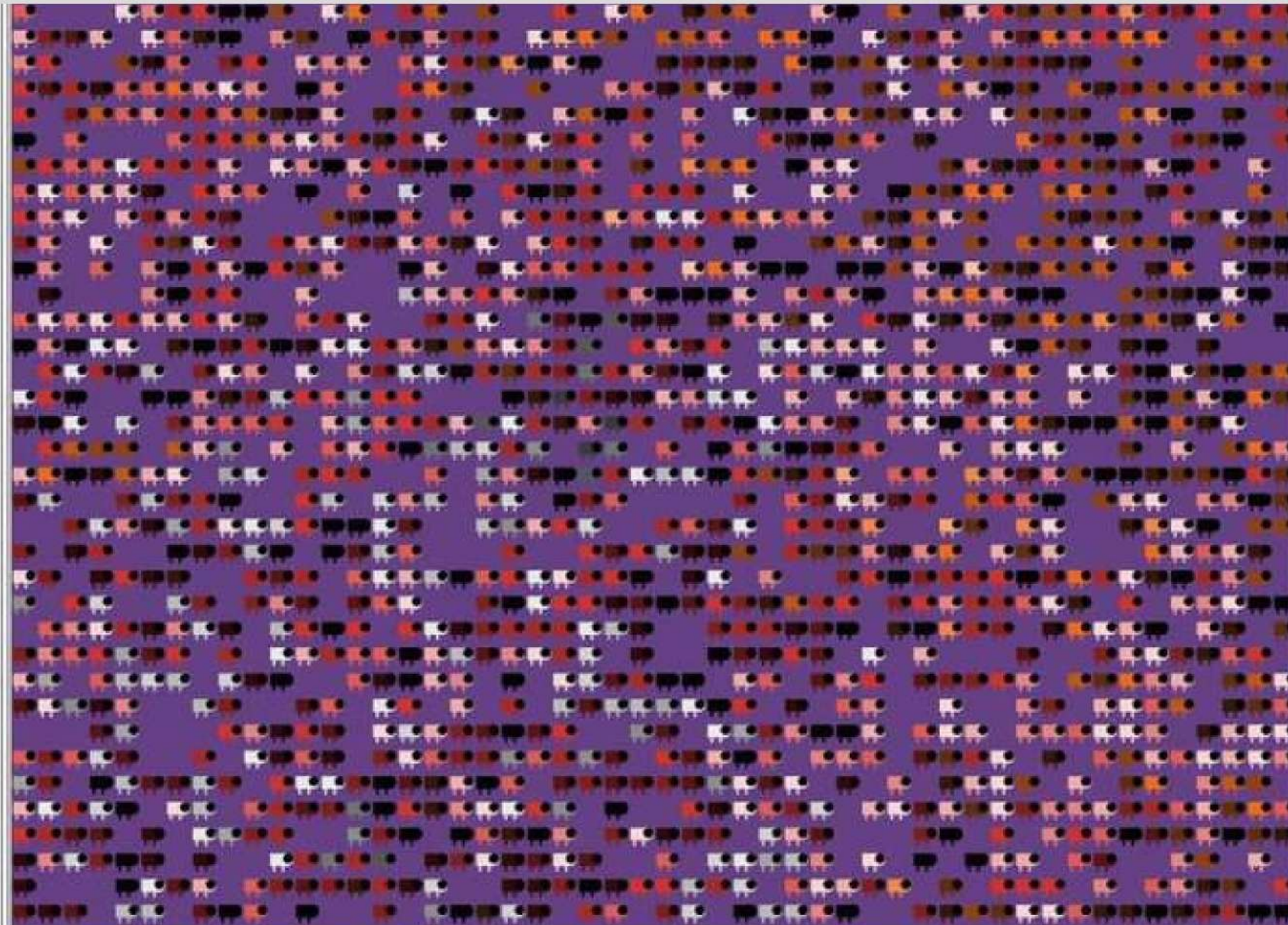
Can change rules of behaviour depending on their unique circumstances

---

Agents can represent individuals. Or not.

(07)

# DYNAMICS



(10)

---

**Local**

Each agent assessed their particular situation

**Bounded**

No assumption of full rationality or global knowledge

**Flexible**

Rules of behaviour may change

---

Anything goes.

<sup>(II)</sup>  
The whole is greater  
than the sum of its parts



---

*Emergence*

Patterns of population-level behaviour that are unexpected

---

*Alternative realities*

In silico laboratory where everything goes

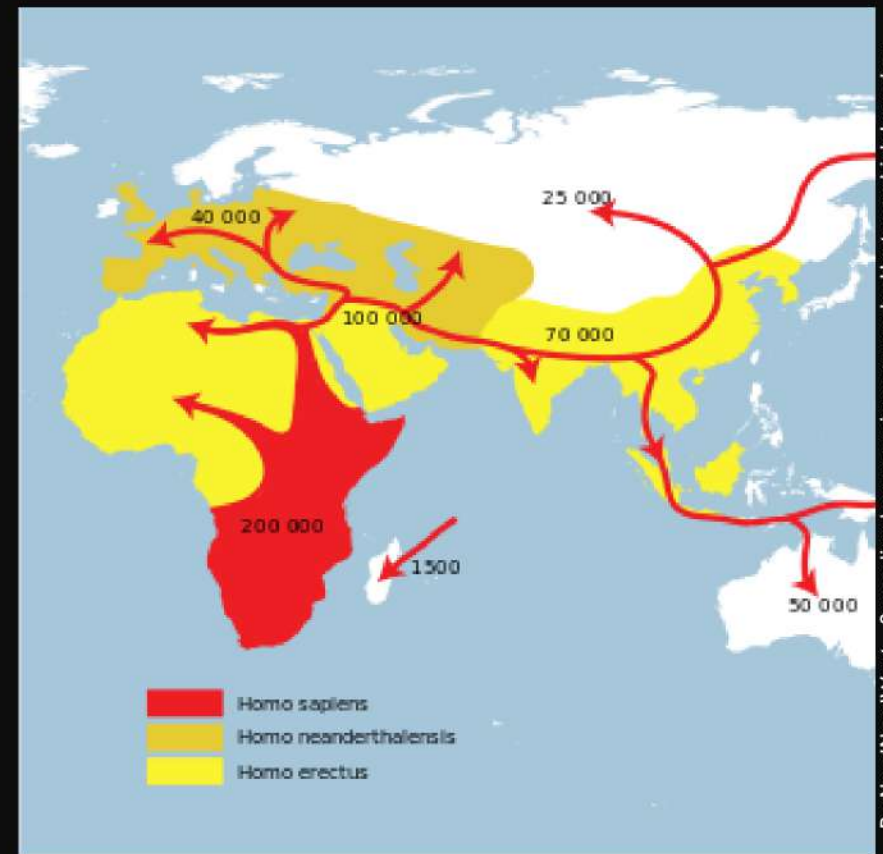
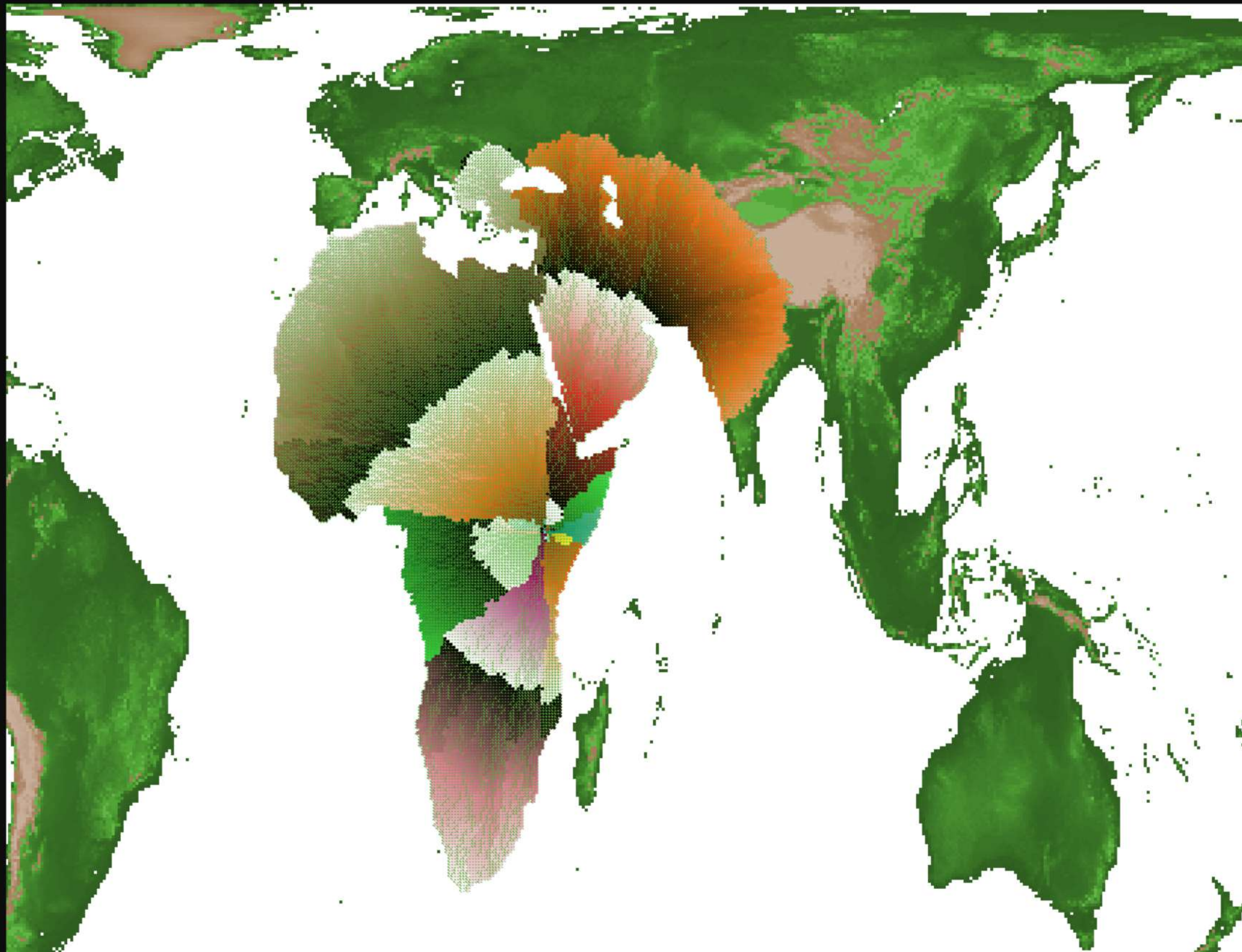
---

*Process-focused*

Unravelling the causality chains

# HOW IS THAT USEFUL FOR STUDYING THE HUMAN PAST?



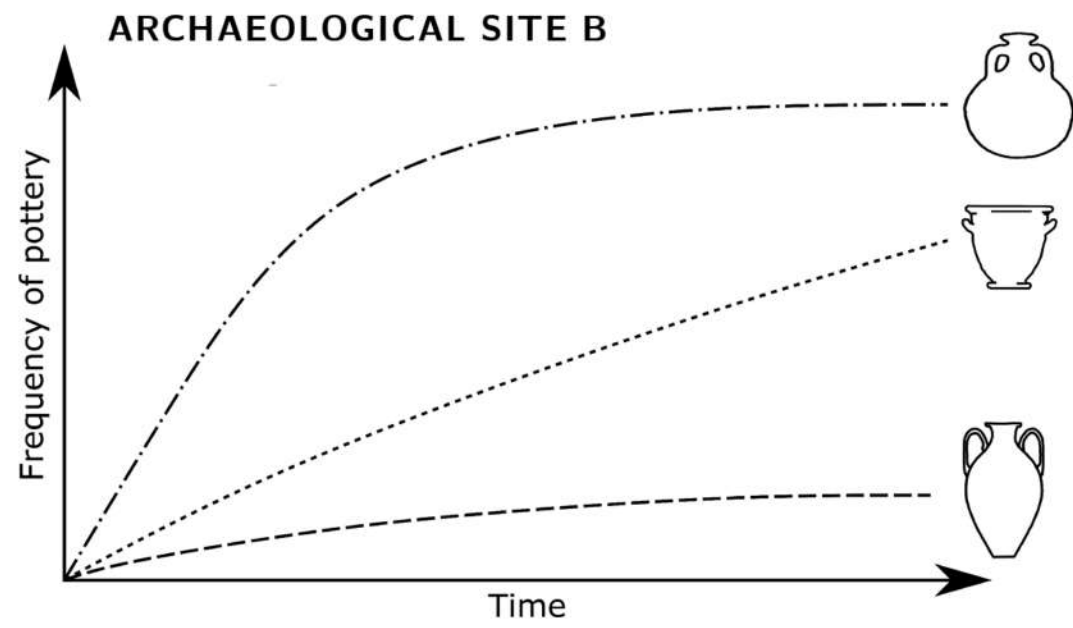
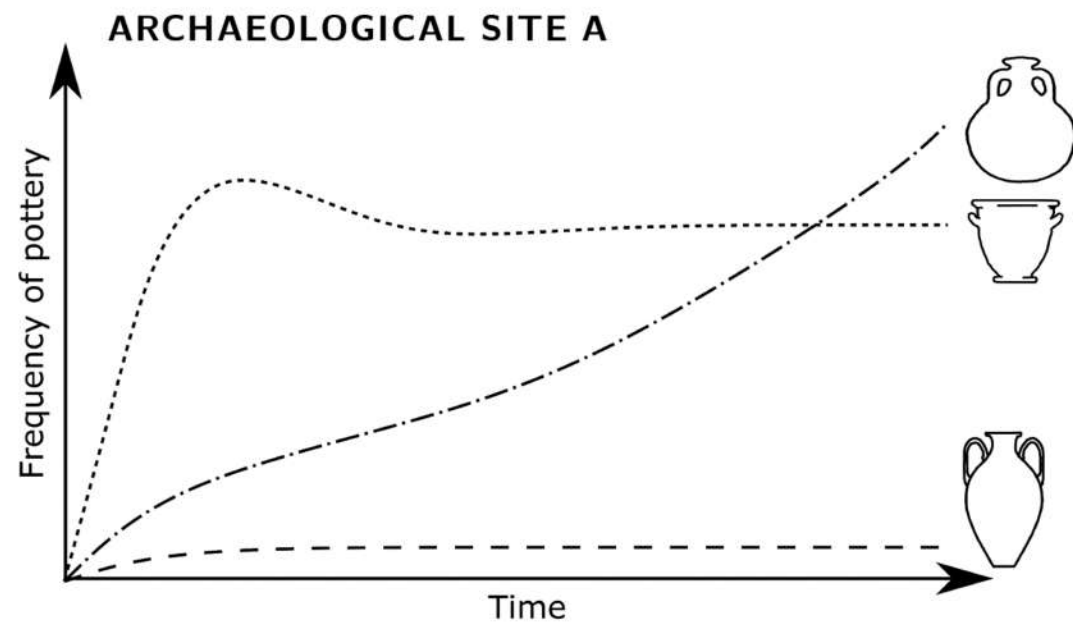


By NordNordWest - Spreading homo sapiens ru.svg by Urutseg which based on Spreading homo sapiens.jpg by Altaleopard, Public Domain, <https://commons.wikimedia.org/w/index.php?curid=34697001>

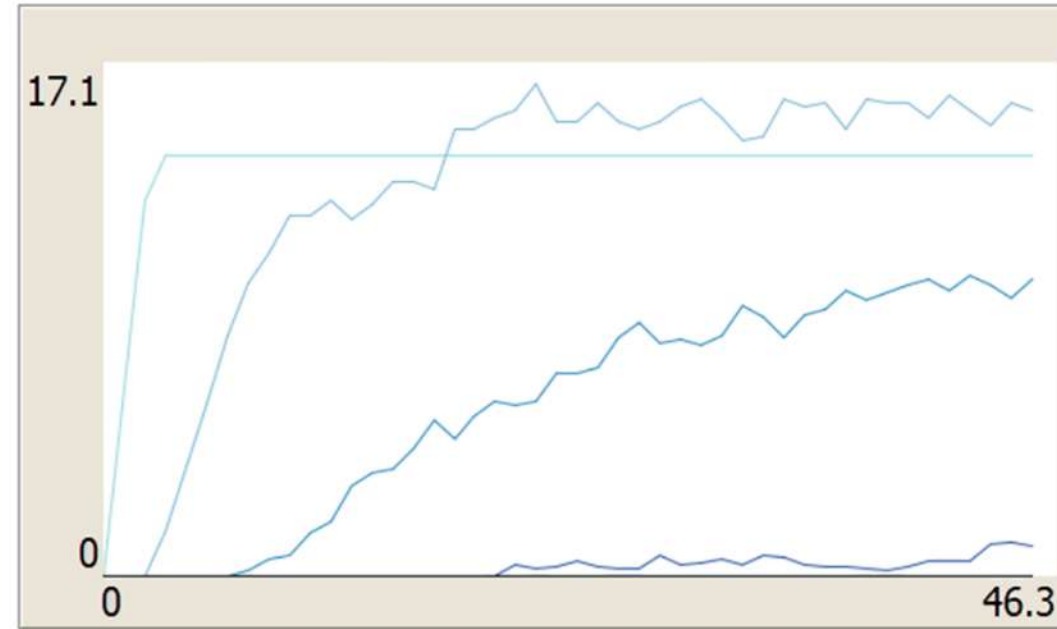
(13)

## FIRST OUT OF AFRICA

The spatial distribution of the first dispersal can be largely explained by geography and biomes.



## The model



Romanowska 2017

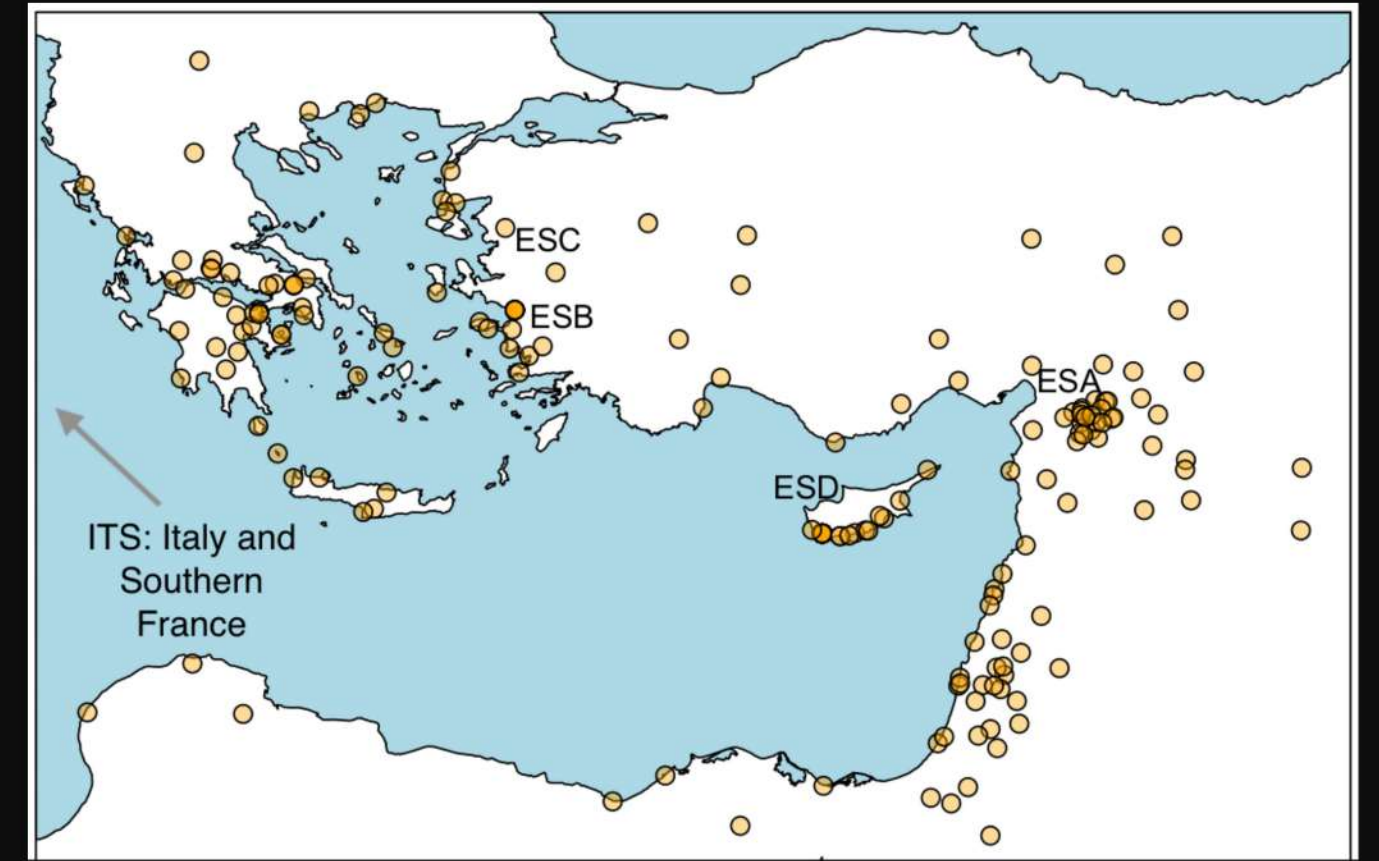
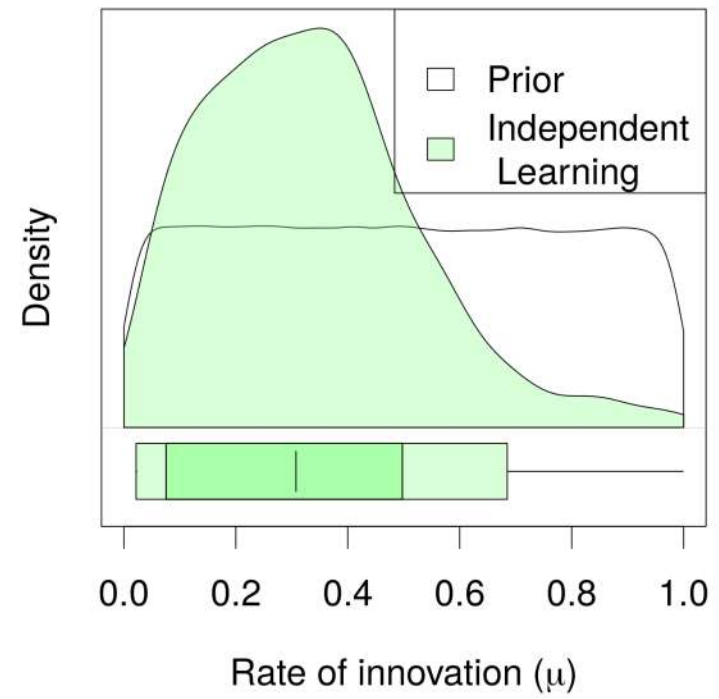
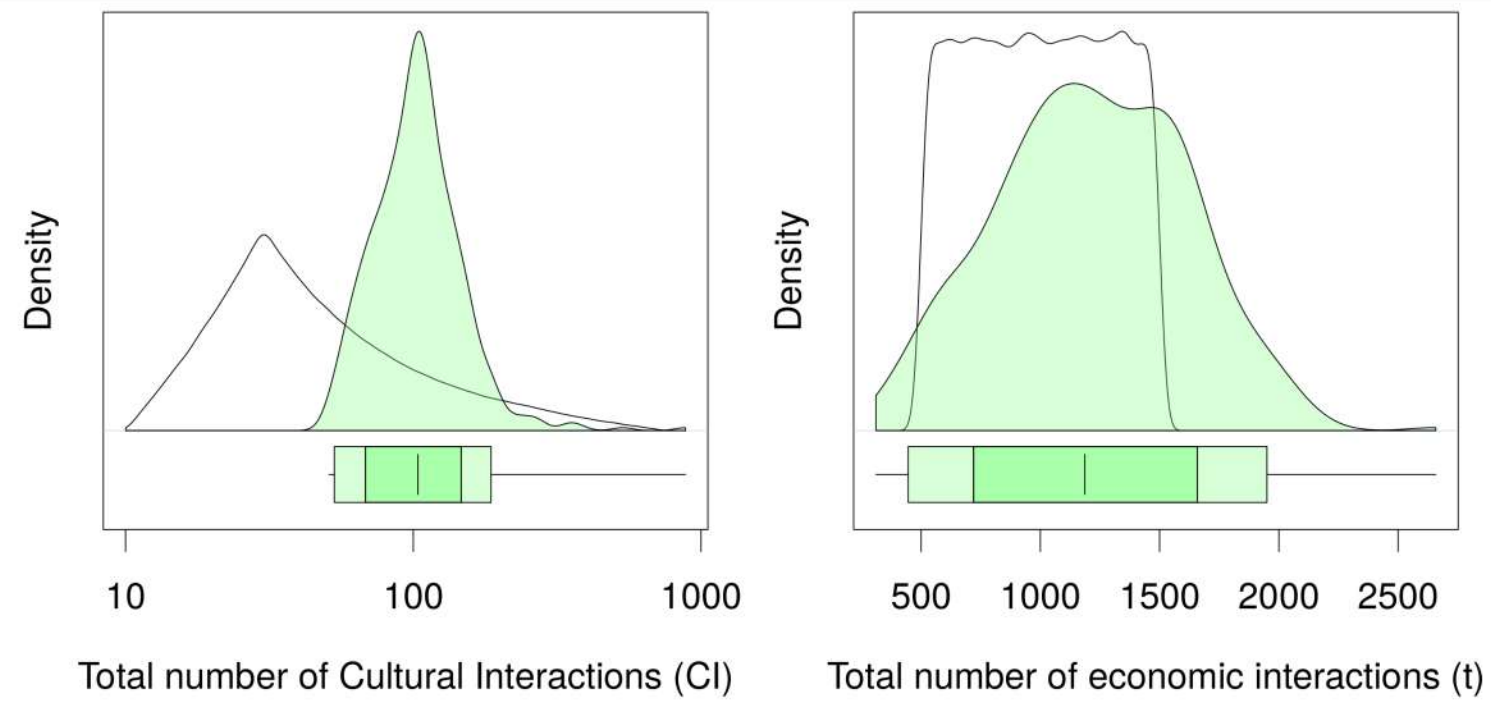


By Ad Meskens - Own work, CC BY-SA 3.0, <https://commons.wikimedia.org/w/index.php?curid=5661567>

(14)

## POTTERY CURVES

The pottery curves are a function of distance and the capacity of intermediate markers.



(15)

## TS DISTRIBUTION IN THE ROMAN EAST

The interactions between traders & markets in the Roman East were limited and the information flow was very low.





# Three super- powers of ABM

(16)

---

THE END OF SCIENCE BY  
AUTHORITY

1

Model definition is intuitive:

- easy to understand dynamics
- familiar entities - important for multidisciplinary projects

2

Enables us to capture emergent phenomena:

- weakening of standard axioms (full rationality, global knowledge, etc)
- communication, adaptation, evolution

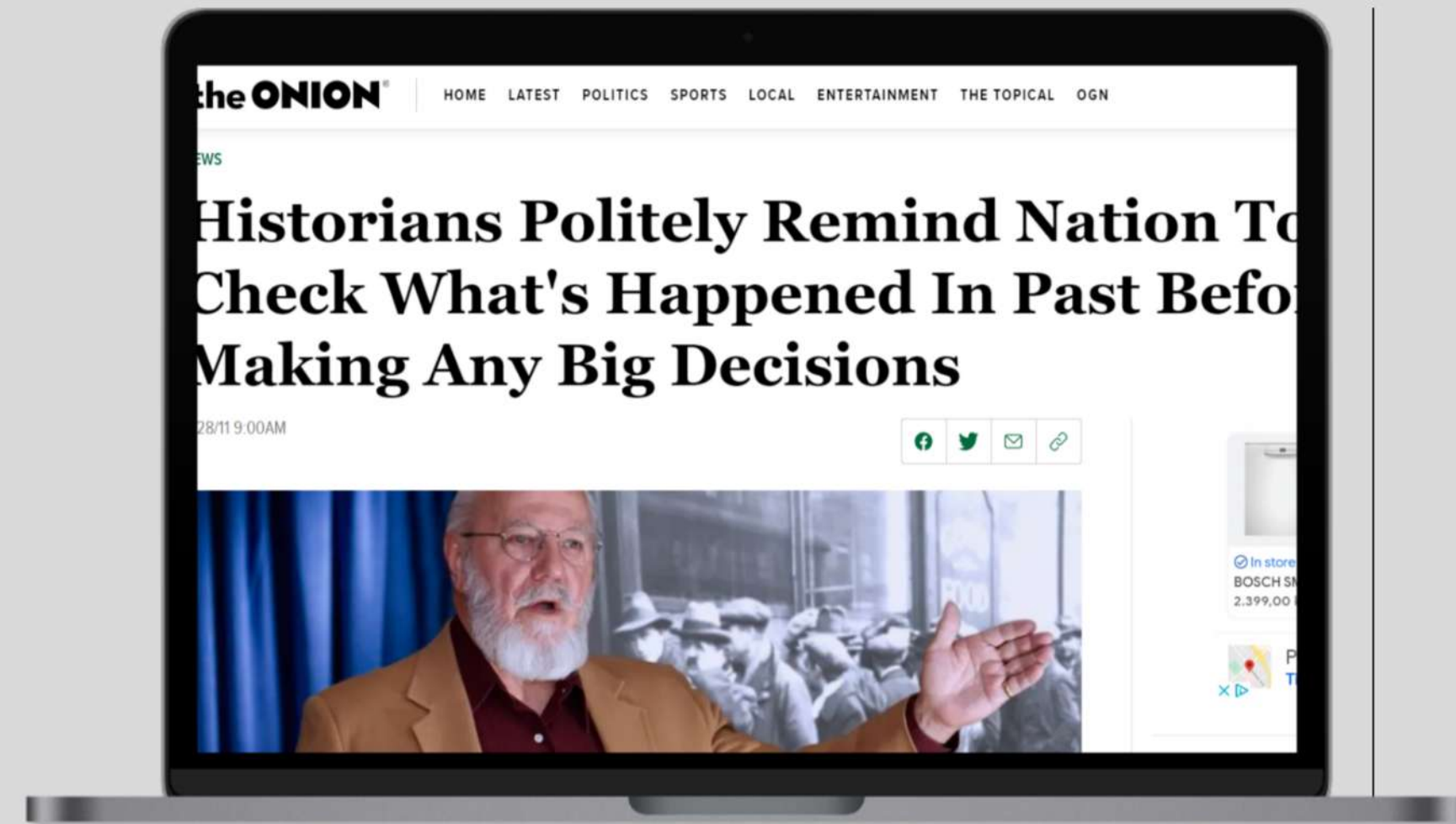
3

Individual agency at the heart:

- heterogeneous population
- local circumstances

# The challenges ahead

- The post-pandemic world
- Climate change & resource exhaustion
- Conflict, migration & culture clash



# Get in touch

@IZA\_ROMANOWSKA

IROMANOWSKA@AIAS.AU.DK

Get the book, it's awesome!

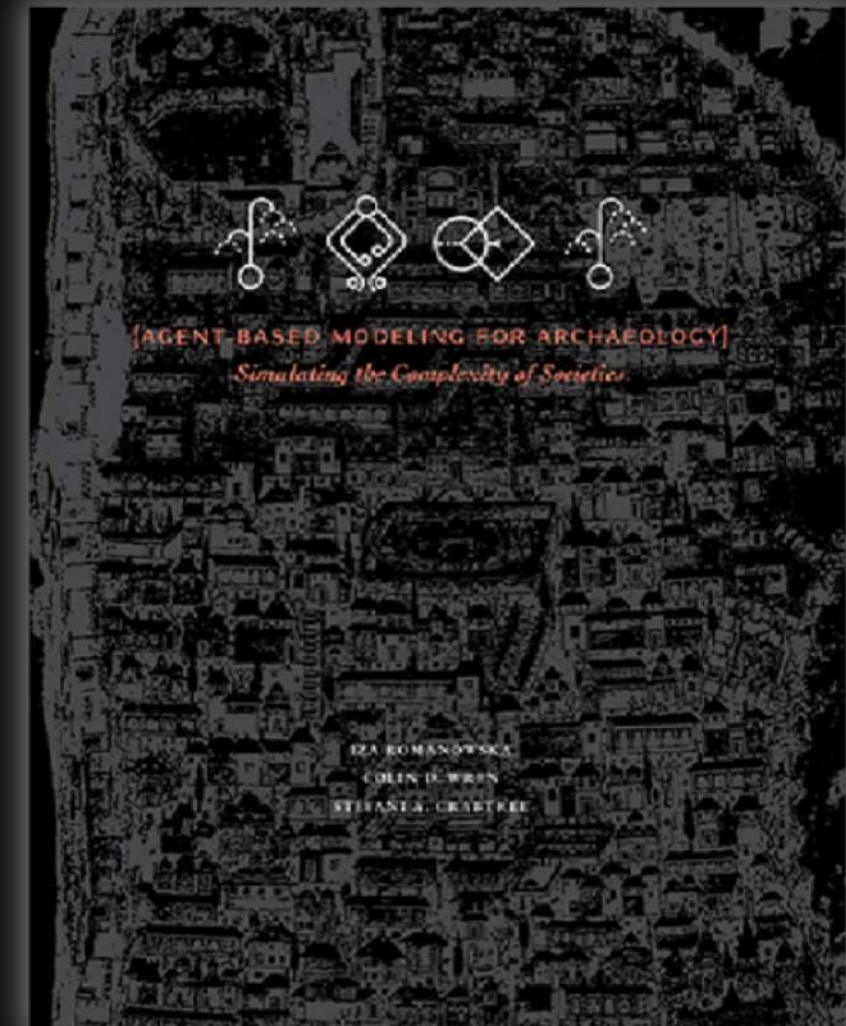
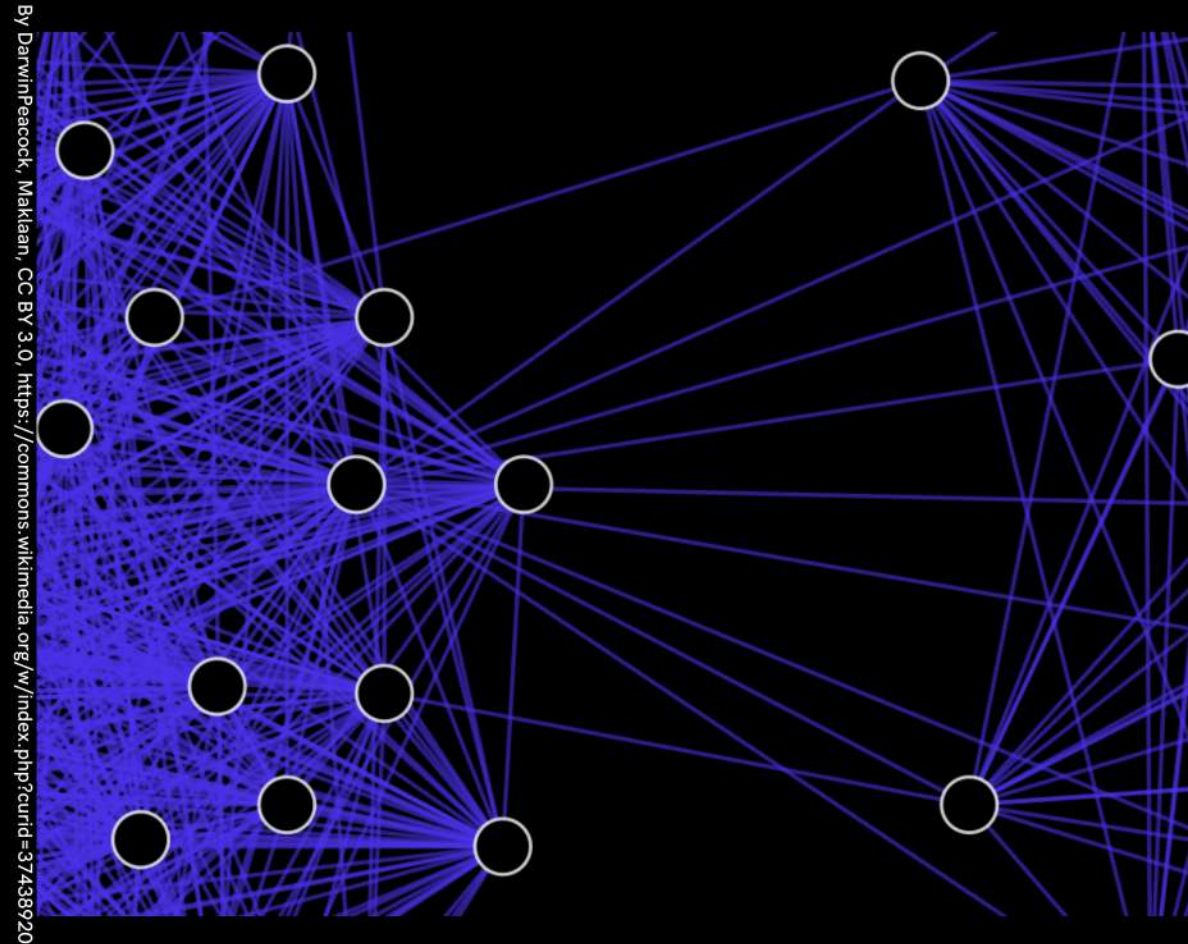


Photo by Elissar Haidar on Unsplash

This project has received funding from the European Union's Horizon 2020 research and innovation programme under the Marie Skłodowska-Curie grant agreement No 754513 (IR) and The Aarhus University Research Foundation (IR).



# Today's Propositions



**A UNIFIED THEORY OF SOCIETY IS POSSIBLE**



**DATA WITHOUT A MODEL IS STAMP COLLECTING**



**WITHOUT MODELLING WE (HUMANITIES) ARE WRITING OURSELVES INTO IRRELEVANCE**